

# DYNAVISION® 5333

## Portable, Compact Parcel X-ray Scanner



Standard with the sharpest 32 bit imaging and RealClear®. Multi-Energy, Threat Image Projection, Image Archiving, and high penetration 160KV generator (30 mm) are popular options available on our 5333.

Control Screening is the leading worldwide producer of fast, reliable, sophisticated X-ray, Metal and Trace Detection screening systems. Visit us at [www.controlscreening.com](http://www.controlscreening.com). Ask about our mobile and larger tunnel systems. Our advanced systems can be readily integrated into existing security arrangements.

The **DYNAVISION® 5333**, 53 cm wide x 33 cm high (20.9" x 13") tunnel opening, is a compact, lightweight and ergonomic conveyORIZED X-ray scanner designed to inspect briefcases, purses, backpacks, mailbags, bins and parcels. Ideal for use at:

- Schools • Courthouses
- Correctional Facilities
- Corporate Facilities •
- Mailrooms • Embassies
- Government Buildings
- Special Events • Airports
- Military Bases • Banks
- Transportation Hubs • Police
- Rentals • Leases • Nuclear
- Seaports • Border Crossings

### Features

- ➔ Engineered with advanced technology for the detection of weapons, explosives, drugs, contraband, and today's more sophisticated threat items.
- ➔ Auto Tracking™ guided conveyor belt system never needs adjustment.
- ➔ Features 53cm W x 33cm H (20.9" x 13") tunnel opening.
- ➔ Narrow footprint enhances security and conveniently fits through 31" (78cm) wide doorway, in elevators and tight spaces; conveyor end folds up (available variable length rollerbed above).
- ➔ Proven reliability and excellent X-ray imaging, robust, user friendly controls and features.
- ➔ Fully featured robust, stainless, user-friendly operator control keyboard including: Dynagraphy® Color, RealClear®, Automatic Threat Alert, 17" Monitor, Multiple Smart Zoom, Lighten, Help, Scan Enhancement and Density Stripping among other features.
- ➔ Advanced technology for detecting concealed explosives, drugs; guns, knives, and other weapons; contraband and today's latest threat items.
- ➔ Material Marking® option to Multi-Energy® automatically highlights suspected items by combining atomic number range and density, for higher discrimination.
- ➔ Standard Dynagraphy™ compact version or airport version with extended conveyor. Available with high resolution Multi-Energy® organic/inorganic differentiation and Stripping, TIP and Material Marking®.
- ➔ Full Auto Sensing™ eliminates the need for troublesome photosensors, added housing parts and optional footpad switch. Moreover, it assures you guaranteed 100% screening of thin items such as courier envelopes.
- ➔ 90KV generator standard, 160KV generator optional.
- ➔ Interactive training and highly responsive service at all times. Designed, made and tested in the USA to rigid ISO 9001 standards.

*Celebrating 70 years of excellence in design and service*

# Control Screening

Dynavision® • Scintrex® • CheckGate® • Federal Labs® • HandWand®  
U.S. U.K. France Canada Middle East Hong Kong Singapore

# Model 5333 Portable X-ray Specifications

## Inspection Capability

Tunnel Size:	20.9" wide (53 cm) 13" high (33 cm) L-shaped detector for 100% package screening
Material Penetration:	0.38" (9.5 mm min, 11 mm typical), <b>over twice industry standard in its class.</b>
Contrast sensitivity:	Over 2 million color tones standard
Resolution:	#38 AWG wire minimum, #40 AWG typical (30 AWG minimum through 7th step of ASTM stepwedge)
Processing:	24 bit color processing with minimum 64 Mbytes memory; 800MHz minimum processor
Conveyor Speed:	48 feet per minute at 60hz (24 cm per second) Fully reversible.

**\*Full Auto Scan without photosensors, moving parts, or footpad.** **Reduces downtime and assures all items and envelopes are scanned, no matter how thin.**

## Video

Standard with 17" color, high resolution, non-interlaced, flicker free, .28 dot pitch, low rad. monitor 1280 x 1024 pixels. Standard Single Energy Dynagraphy™ color is based on an object's density. Multi-Energy color option, with single or dual monitors, displays organic items in orange, inorganic items in blue, and intermediate items in green. Includes Organic and Inorganic Stripping. Also available Threat Image Projection.

## X-ray Generator

X-ray tube head:	Self contained
Operating voltage:	90 kV standard (optional 140 kV, see below)
Duty Cycle:	100% with sealed oil bath cooling
Beam orientation:	diagonal 80°
Dose rate per exam:	0.1 mR typical

## X-ray Detectors

Surface mounted, multi-layer, fully integrated, high frequency, solid state detectors using high speed processors, and Pentium/AMD image processing with 24 bit Color with Single Energy or available Multi-Energy.

## Operator Features

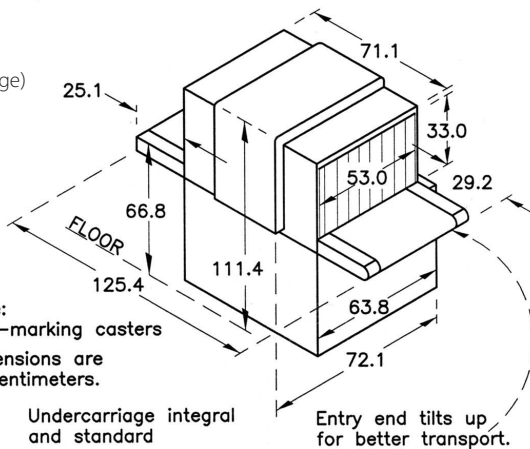
- RealClear™ Search
- Auto Density Alert
- Auto Belt Tracking™
- Full Auto Scan
- Reversible conveyor direction
- Dark & Light enhancements
- Scan enhancement
- Dynagraphy Color; Reverse B&W
- B&W Edge enhancement
- High/Low Density & Stripping
- Multiple Smart Zoom
- High density
- Help
- Fast 25 second warm-up
- Fully functional, robust, low profile

## Custom Options

- Multi-Energy® (M) color material identification with organic & inorganic stripping
- Threat Image Projection (TIP)
- Remote operation, diagnostics
- Material Marking™
- Tropical Humidity Kit
- Loading or exit trays
- Image Archiving
- Additional monitors
- Locking metal keypad cover
- Clear Lexan visors
- 160 KeV (140 operating) generator with 30 mm penetration steel
- CE Marking
- Power conditioner, or UPS
- Footpad or optical On/Off
- Locking monitor hood
- Rental or leases
- Lighter version
- Built-in Training

## Physical Details

Dimensions:	See drawing
Weight:	450 lbs (204kg) (including undercarriage) 675 lbs (306kg) crated
Construction:	Unibody heavy gauge painted steel construction with stainless steel and aluminum trim and accessories. Non-marking wheels.
Environmental Conditions:	Temperature range: 23° to 131°F, -5° to 55°C • Humidity 20 - 95%, non-condensing. Storage to 65°C (149°F)
Electrical Power Requirements:	Consumption: < 0.6kVA 100, 120, 230 volts AC + 10%, < 6 amps. 200, 220, 240, 250 volts AC ± 10%, < 3 amps. All at 50 or 60Hz.



**World Headquarters**  
**Domestic, Federal & Corporate Sales**  
**Control Screening LLC**  
Two Gardner Road  
Fairfield, NJ 07004-2206 USA  
Tel: + (973) 276-6161  
Fax: + (973) 276-6162  
sales@controlscreening.com  
www.controlscreening.com

**In Continental Europe**  
55 Rue Edouard Branly  
F-45800 Saint Jean de Braye, France  
Tel: + 33 2 38 61 97 00  
Fax: + 33 2 38 61 97 01  
eu@controlscreening.com

**In Canada or Middle East**  
Scintrex Trace Corp.  
300 Parkdale Ave, Ottawa  
Ontario, Canada K1Y 1G2  
Tel: + (613) 224-1061  
Fax: + (613) 224-2603  
info@tracedetection.com

**In Asia**  
219 Pasir Ris St 21, 09-166  
Singapore, 1510219  
Tel: + 65 9819-2473  
Fax: + 65 6234-0813  
asia@controlscreening.com

**In the UK**  
64 Chorley Road  
Bispham, Ormskirk, Lancashire L40 3SL UK  
Tel: + 44 125 746 4000  
Fax: + 44 125 745 2878  
uk@controlscreening.com

**En Latina/Central America**  
9600 NW 25th St., Suite 2B  
Miami, FL 33172 USA  
Tel: + (305) 593-5735  
Fax: + (305) 593-9105  
latina@controlscreening.com



www.controlscreening.com  
www.tracedetection.com www.fedlabs.com

**Control Screening**

Celebrating 70 years of excellence in design and service  
Dynavision® • Scintrex® • CheckGate® • Federal Labs® • HandWand®

**Compliance** Complies with the U.S. Federal Aviation Administration Standards "Use of X-Ray Systems" (Federal Standards 14 CFR 108.17 and 14 CFR 129.26; the system conforms to the USBRH Performance Standards for Cabinet X-Ray Systems (21 CFR 1020.40). ISO 9001 compliant. Emergency stop buttons. Cluster LED X-Ray "ON" indicators for lower maintenance. The electrical system conforms to applicable sections of IEC 348 for Electrical Safety and FCC Docket 20780 for Electromagnetic capability.