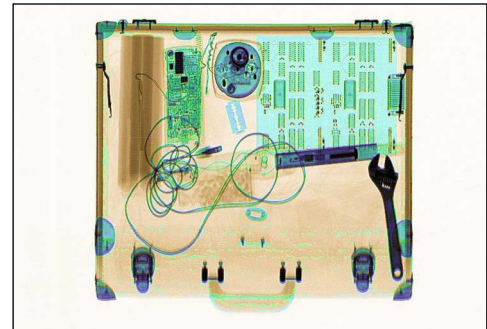




**Control
Screening**

DYNAVISION® 935

1.5 X 1.5 Meter Cargo X-ray Scanner



Control Screening is the leading worldwide producer of reliable, sophisticated X-ray screening systems. Visit us at www.controlscreening.com. Ask about our mobile and larger tunnel systems. A wide range of advanced systems can be readily integrated into existing security arrangements.

The **DYNAVISION® 935** (1.5M² - 59"W x 59"H tunnel opening) is an extremely heavy-duty, conveyORIZED X-ray scanner designed for screening cargo and very large checked luggage, parcels, trunks, crates and pallets. Advanced technology for detecting concealed weapons, explosives, narcotics, currency, contraband or manifest fraud at:

Ports of Entry • Warehouses • Airports
Government Facilities • Loading Docks
Correctional Facilities • Customs • Cruise Ships

- Low to the floor, heavy-duty, high-capacity roller conveyor with easy changeouts. Extremely rugged frame construction uses less floor space and head room.
- Formerly Philips, with over 60 years of experience in design, manufacture and maintenance of x-ray screening systems in the USA.
- Available Multi Energy organic/inorganic color discrimination, with available Material Marking and Image Archiving and Threat Image Projection.
- More robust, user friendly controls and features. Offers outstanding image quality due to high image resolution,

Typical threat objects easily stand out with available Multi Energy Organic/Inorganic Discrimination (available with Image Archiving, Material Marking™ or Threat Image Projection).

complete photodiode scanning. Flicker-free, high-resolution 17" monitors, advanced image processing enhancements with state-of-the-art detector arrays and advanced 24 and 32 bit electronics for superior reliability, all included.

- Sensorless, modular design with fewer subassemblies and wiring for greater reliability.
- The most features and best value in a system this size.
- Standard imaging features include: color, lighten, stripping, reverse B&W, threat alert, zoom, and image, edge, and high penetration enhancements.
- Interactive training and highly responsive service. Rapid, flexible and reliable service team at your disposal at all times.

DYNAVISION® 935 1.5 x 1.5 Meter Cargo Scanner

| | |
|-------------------------------------|--|
| Dimensions of inspection chamber | 155 W x 150 H (cm), 61" W x 59"H x Unlimited Length. |
| Conveyor Speed | Variable, up to 3 m/s 30.5 cm (12") |
| Maximum weight of object | Approx. 2700 lbs/1200 kgs (higher load on request) |
| Article penetration capability | 27 mm typical. |
| Wire detectability | 40 awg |
| Monitor Contrast | Over 2 million color shade levels |
| X-ray dose per inspection (typical) | Approx. 0.1 mrem (1 FSv). |
| Film safety | Guaranteed for high-speed films up to ISO 1600 (33 DIN). |
| Duty cycle | 100%, no warm-up procedure required. |

| | |
|----------------------------------|--|
| X-RAY GENERATOR | 160 kV generator operates at 145 kV constant potential |
| Specifications | Sealed oil bath cooled, 1 mA max. |
| Beam Divergence * beam direction | 80° beam divergence • horizontal & diagonal |

| | |
|------------------------------|---|
| IMAGING SYSTEMS X-RAY | 1680/3360 in Dual Energy) photo diodes (none skipped) |
| Image features | in L-shaped detector array, Dynagraphy Color, Auto Threat, Area Alert, Auto Edge Enhance, Dark and Light Scan, Variable Negative Image, High Resolution mode and High Dense Penetration enhancements. Zoom magnification, 2,4,8,16 times. 17" color monitor with high resolution (flicker-free) image, meets MPR II Energy Standards. |
| Image evaluation functions | LED x-ray "on" indicators for lower maintenance. |
| Digital Memory Processing | 32 bit real time operation, 24 bits/Pixel Color |

| | |
|----------------|--|
| OPTIONS | Multi-Energy (M) with organic and inorganic stripping, Material Marking®, Image Archiving, Threat Image Projection System (TIP); Tropical Kit; custom display. Remote operation; custom display color palette; larger monitor; lockable monitor hood and command center; automatic voltage stabilizers; conveyor extensions; ergonomic, adjustable monitor stand; operator table; dual monitors; CE Marked Kit; remote diagnostics; Remote Image Monitor; Higher HP motor for enhanced pulling power. (Extra extensions shown on front page are optional). Rental/Lease. |
|----------------|--|

| | |
|-------------------|--|
| COMPLIANCE | Meets all applicable radiation protection and health regulations with respect to x-ray emitting devices. Meets USBRH Standards, 21 CFR 1020.408 and FAA Standards 14CFR108.17 and 129.26. Complies with "Machines" guidelines (89/392/EWG) meets IEC 348 and FCC 2078 compatibility standards for electronic and electromagnetic conditions. ISO 9001 compliant. |
|-------------------|--|

| | |
|--|---|
| Operating (storage) temperature, humidity | 0°C- 40°C (- 20°C +70°C) • 95% noncondensing. |
| Power consumption (during inspection cycle). | Power supply 230 VAC + 10% • 50 Hz / 60 Hz + 3 Hz. 110 VAC / 60 Hz + 3 Hz. Typical leakage <0.1mR/hr, .5cm from surface. |
| Dimensions | 285" L x 109" W x 80" H • approx. 3100 lbs, (3600 lbs crated) |
| Mechanical construction | Detachable electronics and generator module. Brushed stainless steel, steel framed with aluminum, composites, and a stainless command center. |

Headquarters Office Corporate & International Sales

Control Screening
2 Gardner Road,
Fairfield, NJ 07004-2206
USA

+ (973) 276-6161
Fax: + (973) 276-6162

e-mail:
sales@controlscreening.com

24 hour website:
www.controlscreening.com

State & Local Government Sales

Control Screening
35 West Pittsburgh Street
Greensburg, PA 15601
USA

+ (724) 837-5411
Fax: + (724) 837-5425

e-mail:
pa@controlscreening.com

In Asia

Control Screening - Seacor
20 Harbour Drive,
PSA Vista 05-01A
Singapore, 117612

+ 65 872-1123
Fax: + 65 872-2762

e-mail:
asia@controlscreening.com

In Europe

90 Avenue Denis Papin
Saint-Jean-de-Braye,
45808F France

+ 33 2 38 61 97 00
Fax: + 33 2 38 61 97 01

e-mail:
ec@controlscreening.com

